

CAT[®] ATTACHMENTS MINI EXCAVATORS COMPATIBILITY GUIDE



FOR HYDRO-MECHANICAL TOOLS

May 2024

COMPATIBILITY GUIDE INDEX

AUGERS / BLADES	3
BROOMS / BUCKETS	4
COLD PLANERS / COUPLERS	5
FLAIL MOWERS / GRAPPLES.....	8
HAMMERS.....	9
SHEARS	10
MULCHERS / THUMBS	11
THUMBS / TILTROTATORS.....	12
TILTROTATORS / TRENCHERS.....	13
VIBRATORY PLATE COMPACTORS	14

THIS DOCUMENT LISTS COMPATIBILITY BY BASE MODEL ONLY, WHICH COVERS ALL MODEL SERIES UNLESS SPECIFIED OTHERWISE.

THIS DOCUMENT LISTS COMPATIBILITY FOR CAT® MINI EXCAVATOR MACHINES AND HYDRO-MECHANICAL ATTACHMENTS IN THE FORM OF:

PART NUMBER | INTERFACE TYPE | HYDRAULICS TYPE

NOTE: INTERFACE AND HYDRAULIC TYPES USE ABBREVIATIONS; SEE THE MATCHING LEGEND ON EACH PAGE FOR REFERENCE. FOR SPECIFIC COMPATIBILITY REQUIREMENTS NOT COVERED IN THIS DOCUMENT, CONSULT YOUR LOCAL CAT DEALER.

MINI EXCAVATOR ATTACHMENTS COMPATIBILITY



Augers

Cat® Augers are used for drilling holes for footings, fencing, signs, trees and shrubs in construction, agricultural, and landscaping applications. They are designed with the right amount of speed and torque for maximum productivity in a broad range of soil types.

UNDER 3 TON

Model (Part Number)	301.5	301.6	301.7	301.8	302	302.7
A11 (218-3206 PO 1A)	■	■	■	■	■	
A11 (218-3207 PO 1A)						■
A23 (218-3197 PO 1A)						■

3 – 4 TON

Model (Part Number)	303	303.5	304
A23 (218-3198 PO 1A)	■	■	■
A41 (220-7137 PO 1A)	■	■	■

5 – 6 TON

Model (Part Number)	305	305.5	306	306.5
A41 (275-1000 PO 1A)	■	■	■	■
A68 (275-1001 PO 1A)	■	■	■	■

7 – 9 TON

Model (Part Number)	307	307.5	308	309
A68 (313-1460 PO 1A)	■	■	■	■



Angle Blades

Cat Angle Blades are useful work tools in a wide range of applications for moving dirt, gravel, livestock waste and snow. They are also useful for finish grade work in construction and landscaping.

6 TON

Width (Part Number)	306
2134 mm (84 in)* (177-1990 SSL SF14)	■

* Requires XTC coupler option to be installed on machine.

PO: Pin On
SSL: Skid Steer Loader

Pin on directly to stick or usable with Pin Grabber style coupler.
Requires machine to have a Skid Steer Loader style coupler.

1A: First Auxiliary
SF14: Standard Flow 14

Requires first auxiliary hydraulics on machine to operate.
Requires standard flow hydraulics with 14 pin electrical connection.

MINI EXCAVATOR ATTACHMENTS COMPATIBILITY



Angle Brooms

Cat Angle Brooms for Skid Steer Loaders, Compact Track Loaders, Backhoe Loaders, Compact Wheel Loaders and Small Wheel Loaders are ideal for clearing parking lots, industrial plants, mill yards, airport runways, streets, driveways and lanes.

6 TON

Model (Part Number)	306
BA118C (448-5660* SSL SF 14)	■

* Requires XTC coupler option to be installed on machine.



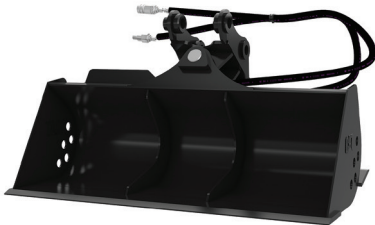
Buckets – Multi-Purpose

Cat Multi-Purpose Buckets for Cat Skid Steer Loaders and Compact Track Loaders are extremely durable buckets, ideal for a wide variety of tasks in construction, landscaping, industrial and demolition applications.

5 – 6 TON

Model (Part Number)	306
1883 mm (74 in) w/Spill Guard, Bolt-On cutting Edge (426-6536* SSL SF)	■
2036 mm (80 in) w/Spill Guard, Bolt-On cutting Edge (426-6548* SSL SF)	■

* Requires XTC coupler option to be installed on machine.



Buckets – Tilting Ditch Cleaning

Tilting Ditch Cleaning Buckets for Cat Mini Excavators are ideal for cleaning wide trenches, loading materials, slope cutting, grading and finishing work in construction, landscaping and road maintenance applications.

1 – 2 TON

Model (Part Number)	301.5	301.6	301.7	301.8	302	302.7
1000 mm (39 in) (244-3073 PO 1A)	■	■	■	■	■	
1000 mm (39 in) (244-3080 CW05 1A)	■	■	■	■	■	
1100 mm (43 in) (246-0093 CW05 1A)						■
1100 mm (43 in) (246-0094 PO 1A)						■

PO: Pin On
SSL: Skid Steer Loader
CW05: CW-05 Coupler

Pin on directly to stick or usable with Pin Grabber style coupler.
Requires machine to have a Skid Steer Loader style coupler.
Requires machine to have a CW-05 type coupler.

1A: First Auxiliary
SF: Standard Flow
SF14: Standard Flow 14

Requires first auxiliary hydraulics on machine to operate.
Requires standard flow hydraulics.
Requires standard flow hydraulics with 14 pin electrical connection.

MINI EXCAVATOR ATTACHMENTS COMPATIBILITY

Buckets – Tilting Ditch Cleaning – continued

3 – 4 TON

Model (Part Number)	303	303.5	304
1200 mm (47 in) (279-4325 PO 1A)	■	■	■

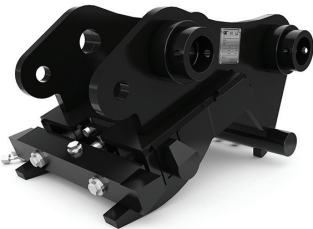


Cold Planers

Cat Cold Planers are designed for small paving jobs in residential and commercial applications and are primarily used to economically restore asphalt and concrete surfaces. They are ideal for milling imperfections prior to resurfacing, removing deteriorated pavement, removing traffic lane stripes and jobs where the use of dedicated planers is limited. The Cat Cold Planers are designed for use on Cat Skid Steer Loaders, Compact Track Loaders, Compact Wheel Loaders and Backhoe Loaders.

5 – 10 TON

Model (Part Number)	305	306	307	307.5	308	309	310
PC35 (619-6535 TI 1A)	■	■	■	■	■	■	
PC45 (619-6545 TI 1A)			■	■	■	■	■



Couplers – CW Series

CW Quick Couplers increase the utilization of an excavator by becoming an all-purpose tool carrier. Simply release one work tool attachment and pick up another in a matter of seconds. Available in hydraulic or manual (spindle) versions.

1 – 4 TON

Model (Part Number)	301.5	301.6	301.7	301.8	302	302.7	303	303.5	304
CW-05 Hydraulic 1 Ton (525-4593 PO DFI)	■	■	■	■	■				
CW-05 Hydraulic 2 Ton (525-4594 PO DFI)						■			
CW-05 Hydraulic 3– 4 Ton (525-4595 PO DFI)							■	■	■
CW-05 Hydraulic 1 Ton (525-4596 PO DFI)	■	■	■	■	■				

TI: Tool Interface

PO: Pin On

CW05: CW-05 Coupler

Requires a mounting bracket to fit to machine.

Pin on directly to stick or usable with Pin Grabber style coupler.

Requires machine to have a CW-05 type coupler.

1A: First Auxiliary

DFI: Dedicated Factory Installed

Requires first auxiliary hydraulics on machine to operate.

Requires dedicated factory installed hydraulics to operate.

MINI EXCAVATOR ATTACHMENTS COMPATIBILITY

Couplers – CW Series – continued

3 – 10 TON												
Model (Part Number)	302.7	303	303.5	304	305	306	306.5	307	307.5	308	309	310
CW-05 Hydraulic 2 Ton (525-4597 PO DFI)	■											
CW-05 Hydraulic 3 – 4 Ton (525-4598 PO DFI)		■	■	■								
CW-10 Hydraulic 4 Ton (525-4611 PO DFI)		■	■	■								
CW-10 Hydraulic 8 Ton (525-4612 PO DFI)								■	■	■	■	
CW-10 Hydraulic 4 Ton (525-4613 PO DFI)		■	■	■								
CW-10 Hydraulic 5 Ton (525-4614 PO DFI)				■	■	■	■					
CW-10 Hydraulic 8 Ton (525-4615 PO DFI)								■	■	■	■	
CW-10 Hydraulic 10 Ton (542-5450 PO DFI)												■



Couplers – Dual Lock™ Pin Grabber

Dual Lock Pin Grabber Couplers allow work tools to be changed quickly - improving overall production and increasing machine versatility.

3 – 10 TONS											
Model (Part Number)	303	303.5	304	305	306	306.5	307	307.5	308	309	310
3 – 4 Ton Hydraulic (485-5300 PO DFI)	■	■	■								
5 Ton Hydraulic (485-5301 PO DFI)				■	■	■					
8 Ton Hydraulic (485-5302 PO DFI)							■	■	■	■	
10 Ton Hydraulic (485-5306 PO DFI)											■

PO: Pin On
CW05: CW-05 Coupler
CW10: CW-10 Coupler

Pin on directly to stick or usable with Pin Grabber style coupler.
 Requires machine to have a CW-05 type coupler.
 Requires machine to have a CW-10 type coupler.

DFI: Dedicated Factory Installed

Requires dedicated factory installed hydraulics to operate.

MINI EXCAVATOR ATTACHMENTS COMPATIBILITY



Couplers – S Type

S Type Couplers are an optimal design for a dedicated quick coupler solution. Low offset, pin grabber ability, and a wedge type locking system ensures a tight fit, no attachment play during use. It also creates the solution to exchange work tools among different platforms and brands.

3 – 10 TON

Model (Part Number)	303	303.5	304	305	305.5	306	306.5	307	307.5	308	309	310
S-40 Pin Grabber 3 Ton (576-1204 PO DFI)	■	■	■									
S-40 LCS 3 Ton (576-1205 PO DFI)	■	■	■									
S-40 Pin Grabber 5 – 6 Ton (576-1206 PO DFI)				■	■	■	■					
S-40 Pin Grabber LCS 5 – 6 Ton (576-1207 PO DFI)				■	■	■	■					
S-45 Pin Grabber LCS 7 – 9 Ton (576-1210 PO DFI)									■	■	■	
S-45 Pin Grabber LCS 10 Ton (576-1211 PO DFI)												■
S-50 Pin Grabber 8 Ton (576-1200 PO DFI)								■	■	■	■	
S-50 Pin Grabber LCS 8 Ton (576-1201 PO DFI)								■	■	■	■	
S-50 Pin Grabber 10 Ton (576-1202 PO DFI)												■
S-50 Pin Grabber LCS 10 Ton (576-1203 PO DFI)												■



Couplers – Tilting Dual Lock™ Pin Grabber

Tilting Dual Lock Pin Grabber Couplers allow work tools to be changed quickly, improving overall production and increasing machine versatility. The Tilting Dual Lock Coupler maintains a tight fit with an innovative wedge design. It can be used with compatible pin-on work tools and in front shovel mode with buckets. The Tilting Dual Lock Coupler also comes with a visible locking mechanism for added security.

5 – 10 TON

Model (Part Number)	305	306	306.5	307	307.5	308	309
5 Ton Tilting Dual Lock Pin Grabber (485-5304 PO DFI)	■	■	■				
8 Ton Tilting Dual Lock Pin Grabber (485-5305 PO DFI)				■	■	■	■

PO: Pin On

Pin on directly to stick or usable with Pin Grabber style coupler.

DFI: Dedicated Factory Installed

Requires dedicated factory installed hydraulics to operate.

MINI EXCAVATOR ATTACHMENTS COMPATIBILITY



Flail Mowers

Cat Flail Mowers for Mini Excavators are designed for high-performance cutting and mulching of vegetation and undergrowth from overgrown and forested terrain. Flail Mowers are ideal for environmental maintenance applications, such as mowing along ditches, fence rows and retention ponds and cleaning up high banks and slopes.

5 – 9 TON

Model (Part Number)	305	306	306.5	307	307.5	308	309
HMF110 (504-6010 PO 1A)	■	■	■				
HMF210 (504-6011 PO 1A)				■	■	■	■



Multi-Purpose Grapples

Multi-Purpose Grapples are designed to allow maximum maneuverability with Cat Tiltrotators. The integrated bracket has a minimal offset to optimize performance. The Multi-Purpose Grapple works best in material handling applications where irregular surface materials are used, such as concrete pipe, curbs, trees, brush and other hardscape used in landscaping.

5 – 10 TON

Model (Part Number)	305	306	306.5	307	307.5	308	309	310
G206 (576-1230 TI 1A) 5 – 6 Ton	■	■	■					
G208 (576-1220 TI 1A) 7 – 10 Ton				■	■	■	■	■



Demolition and Sorting Grapples

Demolition & Sorting Grapples are designed for fast, productive material handling. Capable of high-volume, production loading and precise sorting, they enhance the productivity and efficiency of your operation. The grapples can handle anything from primary and secondary demolition to recycling to get the job done.

7 – 10 TON

Model (Part Number)	307	307.5	308	309	310
G308 (576-1240 TI 2A)	■	■	■	■	■

PO: Pin On
TI: Tool Interface

Pin on directly to stick or usable with Pin Grabber style coupler.
Requires a mounting bracket to fit to machine.

1A: First Auxiliary
2A: Second Auxiliary

Requires first auxiliary hydraulics on machine to operate.
Requires second auxiliary hydraulics on machine to operate.

MINI EXCAVATOR ATTACHMENTS COMPATIBILITY



Hammers

Cat Hammers are high performance breakers, designed for maximum performance on demolition, construction and road work.

1 – 2 TON

Model (Part Number)	300.9D	300.9D VPS & HPU300	301.5	301.6	301.7	301.8	302	302.7
B1 (532-9101 TI 1A)			■	■	■	■	■	
B1s (532-9201 TI 1A)			■	■	■	■	■	
B1 Pin On (573-4711 PO 1A)	■	■						
B2 (532-9102 TI 1A)			■	■	■	■	■	■
B2s (532-9202 TI 1A)			■	■	■	■	■	■
B2 Pin On (576-5525 PO 1A)			■	■	■	■	■	
B2 Side Mount (576-5530 PO 1A)			■	■	■	■	■	

1 – 2 TON

Model (Part Number)	300.9D	301.5	301.6	301.7	301.8	302	302.7
B2 Side Mount (576-5540 PO 1A)		■	■	■	■	■	
H35s (561-2548 TI 1A)		■	■	■	■	■	
H45s (561-2549 TI 1A)		■	■	■	■	■	■

3 – 4 TON

Model (Part Number)	303	303.5	304
B2 (532-9102 TI 1A)	■	■	
B2s (532-9202 TI 1A)	■	■	
B4 (532-9104 TI 1A)			■
B4s (532-9204 TI 1A)			■
B4 Side Mount (532-9304 PO 1A)	■	■	■
B6 (532-9106 TI 1A)			■
B6s (532-9206 TI 1A)			■
H45s (561-2549 TI 1A)	■	■	
H55s (561-2551 TI 1A)			■

5 – 6 TON

Model (Part Number)	305	305.5	306	306.5
B4 (532-9104 TI 1A)	■	■		
B4s (532-9204 TI 1A)		■		
B6 (532-9106 TI 1A)	■	■	■	■
B6s (532-9206 TI 1A)			■	
B6 Side Mount (532-9306 PO 1A)	■	■	■	■
B8 (532-9108 TI 1A)			■	■

PO: Pin On
TI: Tool Interface

Pin on directly to stick or usable with Pin Grabber style coupler.
Requires a mounting bracket to fit to machine.

1A: First Auxiliary

Requires first auxiliary hydraulics on machine to operate.

MINI EXCAVATOR ATTACHMENTS COMPATIBILITY

Hammers – continued

5 – 6 TON

Model (Part Number)	305	305.5	306	306.5
B8s (532-9208 TI 1A)			■	■
H55s (561-2551 TI 1A)	■	■		
H65s (561-2552 TI 1A)	■	■	■	■

7 – 9 TON

Model (Part Number)	307	307.5	308	309
B6 (532-9106 TI 1A)	■	■	■	■
B6s (532-9206 TI 1A)	■	■	■	■
B8 (532-9108 TI 1A)		■	■	■
B8s (532-9208 TI 1A)		■	■	■
B8 Side Mount (532-9308 PO 1A)	■	■	■	■
B9 (532-9109 TI 1A)		■	■	■
B9s (532-9209 TI 1A)		■	■	■
H80s (561-2553 TI 1A)		■		■
H95s (561-2555 TI 1A)	■	■	■	■

10 TON

Model (Part Number)	310
B9 (532-9109 TI 1A)	■
B9s (532-9209 TI 1A)	■
H95s (561-2555 TI 1A)	■



Mobile Scrap & Demolition Shears

Steel-frame demolition and scrap processing are the starting points for metals recycling. Cat Scrap and Demolition Shears power through these applications, providing the production and reliability that keep your operation in the black. Available in sizes to fit Cat machines from skid-steers to large excavators.

5 – 9 TON

Model (Part Number)	305	306	306.5	307	307.5	308	309	310
S308 (583-8100 TI 2A)	■	■	■	■	■	■	■	■

TI: Tool Interface
PO: Pin On

Requires a mounting bracket to fit to machine.
Pin on directly to stick or usable with Pin Grabber style coupler.

1A: First Auxiliary
2A: Second Auxiliary

Requires first auxiliary hydraulics on machine to operate.
Requires second auxiliary hydraulics on machine to operate.

MINI EXCAVATOR ATTACHMENTS COMPATIBILITY



Mulchers

Cat Mulchers for Skid Steer Loaders and Compact Track Loaders are designed for high-performance cutting and mulching vegetation and undergrowth from forested terrain. The hydraulic mulcher reduces saplings, shrubs and trees into mulched material, making it ideal for environmental maintenance, such as creating fire lanes. Other applications include land reclamation, foliage removal from building construction sites, and shredding pruned material and organic waste for biomass production.

7 – 10 TON

Model (Part Number)	307	307.5	308	309	310
HM208 (504-6012 PO 1A)	■	■	■	■	■
HM210 (504-6013 PO 1A)	■	■	■	■	■



Thumbs – Pro Series Hydraulic

Pro Series Hydraulic Thumbs (Pro and Pro Plus models) offer the best load control and are rugged enough for demolition, handling rip rap and other heavy-duty tasks.

7 – 9 TON

Model (Part Number)	307	307.5	308	309
671 mm (26 in) 4 Teeth / 2 Tines (305-6744 PO 1A)	■	■	■	■
858 mm (34 in) 6 Teeth / 2 Tines (305-6745 PO 1A)	■	■	■	■



Thumbs – Utility

Utility thumbs offer a cost-effective thumb design with hydraulic thumb control, combined with wide compatibility with machines, buckets and couplers.

1 – 2 TON

Model (Part Number)	301.5	301.6	301.7	301.8	302	302.7
292 mm (11 in) 5 Teeth / 2 Tines (555-8424 PO 1A)	■	■	■	■	■	
346 mm (14 in) 5 Teeth / 2 Tines (451-6380 PO 1A)						■

PO: Pin On

Pin on directly to stick or usable with Pin Grabber style coupler.

1A: First Auxiliary

Requires first auxiliary hydraulics on machine to operate.

MINI EXCAVATOR ATTACHMENTS COMPATIBILITY

Thumbs – Utility – continued

3 – 4 TON

Model (Part Number)	303	303.5	304
326 mm (13 in) 8 Teeth / 2 Tines (452-2740 PO 1A)	■	■	■

5 – 6 TON

Model (Part Number)	305	306	306.5
356 mm (14 in) 8 Teeth / 2 Tines (575-0496 PO 1A)	■	■	■

7 – 9 TON

Model (Part Number)	307	307.5	308	309
435 mm (17 in) 6 Teeth / 2 Tines (305-6741 PO 1A)	■	■	■	■

10 TON

Model (Part Number)	310
457 mm (18 in) 6 Teeth / 2 Tines (540-6735 PO 1A)	■



Tiltrotators

Cat Tiltrotators for excavators provide 360-degree rotation and 40-degree tilting action side-to-side, allowing the machine to reach more work areas from a single position. The tiltrotator enables the operator to maneuver around posts, rocks, and other obstacles, as well as to reach along ditch edges more easily.

1 – 4 TON

Model (Part Number)	302.7 ¹	303 ²	303.5 ²	304 ²
TRS4 (608-4480 S40 1A)		■	■	■
TRS4 (608-4481 PO 1A)		■	■	■
TRS4 (608-4482 PO 1A)		■	■	■
TRS4 (608-4483 PO 1A)	■			
TRS4 (608-4484 PO 1A)	■			

5 – 6 TON

Model (Part Number)	305 ³	306 ³	306.5 ³
TRS6 (585-0421 S40 1A)	■	■	■
TRS6 (585-0424 PO 1A)	■	■	
TRS6 (585-0425 PO 1A)	■	■	

1. Compatible only with serial number prefixes CZ6 1 and up
2. Compatible only with serial number prefixes MY3 1 and up

3. Compatible only with serial number prefixes AX5 1 and up, 6G6 1 and up, 6W6 1 and up

PO: Pin On

Pin on directly to stick or usable with Pin Grabber style coupler.

1A: First Auxiliary
S40: S-40

Requires first auxiliary hydraulics on machine to operate.
Requires machine to have a S-40 type coupler.

MINI EXCAVATOR ATTACHMENTS COMPATIBILITY

Tiltrotators – continued

7 – 10 TON

Model (Part Number)	307.5 ⁴	308 ⁵	309 ⁶	310 ⁷
TRS8 (570-7123 PO 1A)				■
TRS8 (617-0566 S45 1A)	■	■	■	■
TRS8 (617-0567 PO 1A)	■	■	■	
TRS8 (617-0568 PO 1A)				■
TRS8 (617-0570 S50 1A)	■	■	■	■
TRS8 (617-0571 PO 1A)	■	■	■	
TRS8 (617-0572 PO 1A)				■
TRS8 (617-0573 PO 1A)	■	■	■	
TRS8 (617-0574 PO 1A)				■



Trenchers

Cat Trenchers are designed for cutting narrow straight trenches in the soil prior to laying electrical, telephone and cable lines, or water and gas pipe. Trenchers are ideal for residential, commercial, agricultural, building construction, lawn care and golf course maintenance.

6 TON

Model (Part Number)	306
T109 Manual Side Shift (261-4806 SSL SF)	■
T109 Manual Side Shift (253-9509 SSL SF)	■
T112 Manual Side Shift (233-2346 SSL SF)	■

* Requires XTC coupler option to be installed on machine.

4. Compatible only with serial number prefixes GW7 1 and up

5. Compatible only with serial number prefixes GG8 1 and up, GW8 1 and up

6. Compatible only with serial number prefixes GG8 1 and up, GW9 1 and up

7. Compatible only with serial number prefixes GWT 1 and up

PO: Pin On
S45: S-45
S50: S-50

Pin on directly to stick or usable with Pin Grabber style coupler.
Requires machine to have a S-45 type coupler.
Requires machine to have a S-50 type coupler.

1A: First Auxiliary
SF: Standard Flow
SSL: Skid Steer Loader

Requires first auxiliary hydraulics on machine to operate.
Requires standard flow hydraulics and no electrical connection.
Requires machine to have a Skid Steer Loader style coupler.

MINI EXCAVATOR ATTACHMENTS COMPATIBILITY



Vibratory Plate Compactors

Vibratory Plate Compactors are used for compacting soil, sand or gravel prior to pouring concrete or laying asphalt. They are also ideal for asphalt patch work. Their capabilities and lower investment and maintenance costs make them popular with pavers, general contractors and utility contractors in residential, commercial or industrial applications.

2 – 10 TON

Model (Part Number)	302.7	303	303.5	304	305	305.5	306	307	307.5	308	309	310
CVP16 (612-9616 TI 1A)	■	■	■	■	■		■					
CVP28 (612-9628 TI 1A)		■	■	■	■	■	■	■	■	■	■	
CVP40 (612-9640 TI 1A)							■	■	■	■	■	■
CVP55 (612-9655 TI 1A)								■	■	■	■	■

TI: Tool Interface

Requires a mounting bracket to fit to machine.

1A: First Auxiliary

Requires first auxiliary hydraulics on machine to operate.

© 2024 Caterpillar. All Rights Reserved. CAT, CATERPILLAR, LET'S DO THE WORK, their respective logos, "Caterpillar Corporate Yellow", the "Power Edge" and Cat "Modern Hex" trade dress as well as corporate and product identity used herein, are trademarks of Caterpillar and may not be used without permission